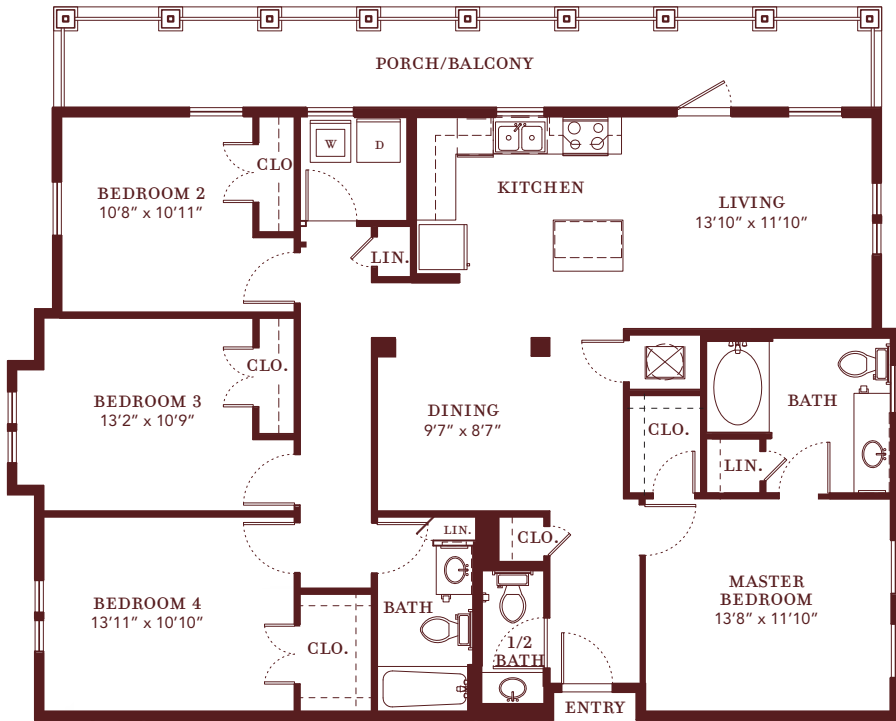


Floor plans are artist renderings and may vary in precise detail and dimension from our individual constructed homes.

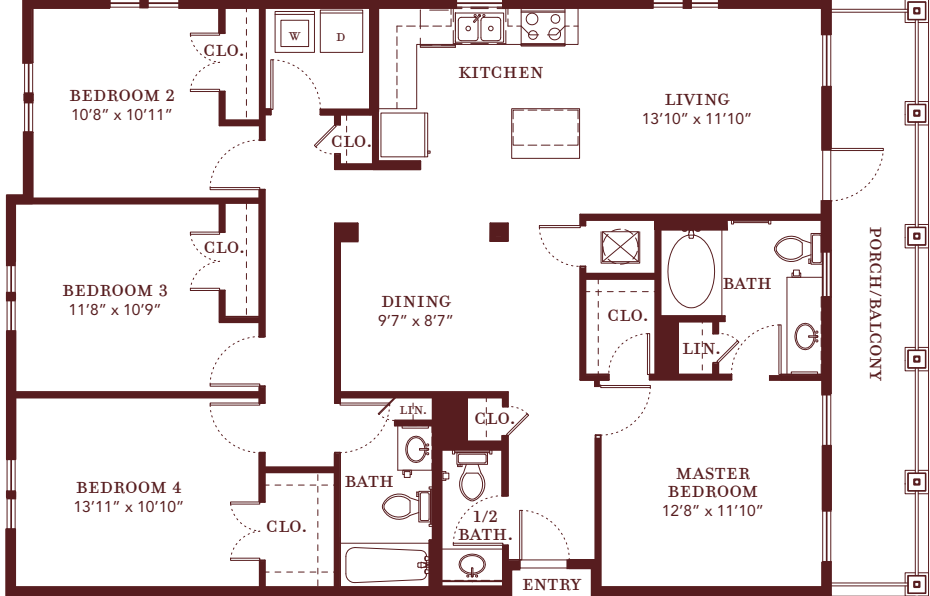


*the Jumonville*  
 4 BEDROOMS | 2.5 BATH  
 1,534 SQ.FT.

*fall in love with this home's*  
 KITCHEN WITH ISLAND  
 GARDEN TUB IN MASTER BATH  
 LINEN CLOSETS  
 LAUNDRY ROOM  
 FORMAL DINING ROOM

*the Hamburg*  
 4 BEDROOM | 2.5 BATHROOM  
 1,504 SQ. FT.

*fall in love with this home's*  
 KITCHEN WITH ISLAND  
 GARDEN TUB IN MASTER BATH  
 LINEN CLOSETS  
 LAUNDRY ROOM  
 FORMAL DINING ROOM



*the root of living well*

1400 MILTON STREET | NEW ORLEANS, LA 70122  
504-284-GROW(4769) | FAX 504-282-2324  
WWW.COLUMBIAPARC.COM

